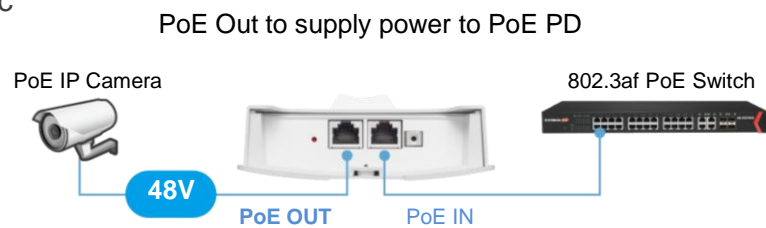


## AC1300 Wave 2 Dual-Band PoE Outdoor Add-on Access Point

OAP1300 Office +1

### KEY FEATURES

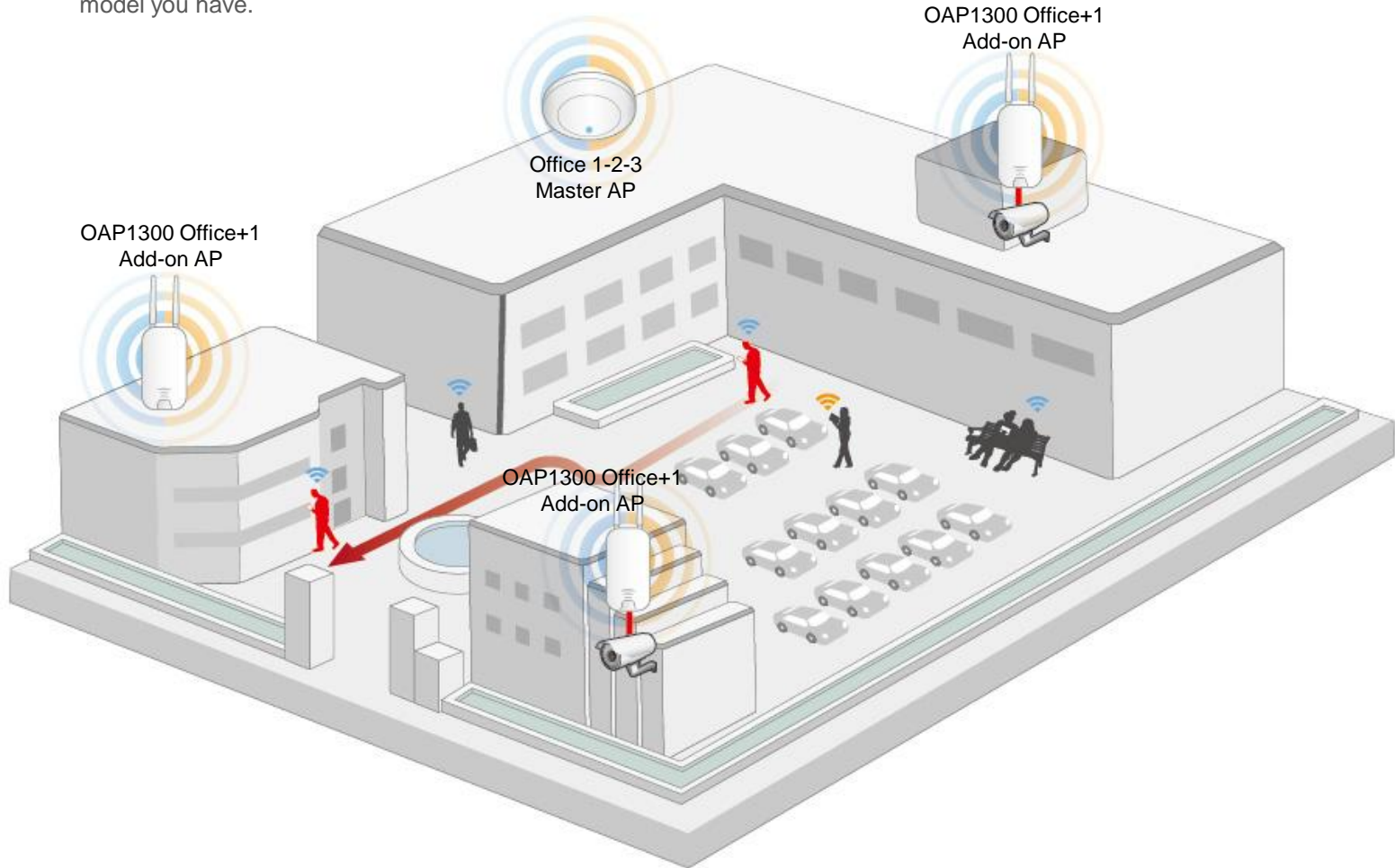
- 802.11ac High Speed Dual-Band:** IEEE 802.11ac concurrent dual-band with 1300Mbps wireless speed.
- Multi-Device (MU-MIMO):** Efficient MU-MIMO (Multiple User - Multiple Input Multiple Output) technology serves multiple devices simultaneously.
- Easy Installation:** Wall-mount or pole-mounted design with easy installation kit.
- Rugged Construction:** IP56 weatherproof housing can perform normally under rigorous weather.
- Designed for High Density Usage:** Supports up to two hundred users simultaneously (one hundred users per band), ideal for crowded environments and BYOE (Bring Your Own Everything) workplace Wi-Fi connection.
- Multiple SSIDs for Security Management:** Supports up to 32 SSIDs (16 x 2.4GHz & 16 x 5GHz) ideal for multiple departments, user groups, customers or guests.
- Fast Roaming:** Roams smoothly between APs without lag or interruption, ensuring top performance for video and voice streaming applications.
- Wide Coverage & High Sensitivity:** Adjustable RF output power and high receiver sensitivity for wide coverage across large spaces.
- Beamforming & Airtime Fairness:** Significantly improves Wi-Fi range and performance.



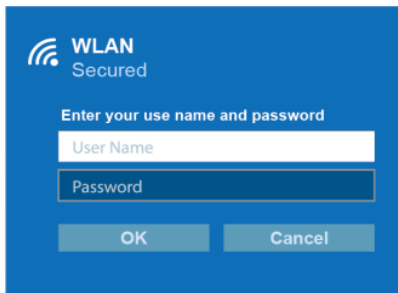
- Seamless Mobility:** 1.5x greater coverage than typical APs for blanket coverage to ensure seamless connectivity for Wi-Fi devices across enterprise environments.
- Power over Ethernet In/Out:** Supports IEEE 802.3at PoE and IEEE 802.3af PSE, PoE out (802.3af) to power another PoE device such as IP camera or outdoor AP.
- Built-in Lighting Arrester:** Built-in withstands up to 10 kA current provides lightning protection for your wireless equipment.
- Built-In RADIUS Server:** With management for up to 256 user accounts.
- Central Management:** Edimax Pro Network Management Suite (NMS) for easy and intuitive web-based central management that supports AP array architecture.
- Only Works with Office 1-2-3 Wi-Fi System Master AP:** With upgradeable firmware for full Office 1-2-3 system compatibility, the integration supports guest, employee and device networks to offer a perfect solution for Office with outdoor area or warehouse.

## OUTDOOR APPLICATION

OAP1300 Office+1 only works with Office 1-2-3 Wi-Fi System Master AP. Please check the color box label to see what model you have.

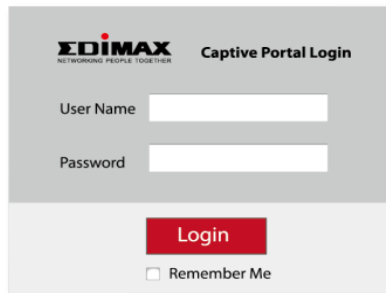


### Office Network



Each employee has his/her own Wi-Fi access account and password.

### Guest Network



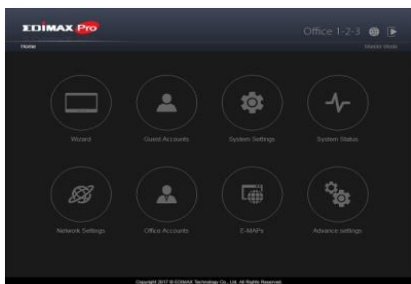
Login to guest network via captive portal and SMS authentication.

### Device Network

Device Name	MAC Address
IPCAM1	00:34:45:66:1A:01
IPCAM2	00:34:45:66:1A:02
IPCAM3	00:34:45:66:1A:03
Printer1	00:34:45:66:1A:04
Printer2	00:34:45:66:1A:05

Access Control List (ACL) to manage wireless equipment.

### Intuitive UI



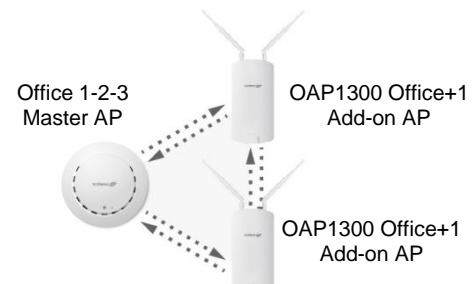
The icon based interface quickly setup networks in a few steps.

### E-MAP



Shows wireless coverage and status of your APs on E-MAP.

### Self Management



The AP is pre-configured and self-managed for easy setup.

# AC1300 Wave 2 Dual-Band PoE Outdoor Add-on Access Point

## SPECIFICATIONS

Hardware	
LAN Interface	Giga x 2
PoE	LAN1: PoE IN (802.3af/at) LAN2: PoE OUT (802.3af)
Antenna	Type: 2 x External Gain: 3.9dBi (2.4GHz), 4.4dBi (5GHz)
Power	802.3at (PoE Injector Optional)
Dimensions (L x W x H)	27.18 x 12.09 x 3.5 cm
Weight	592g
Power Consumption (Full Loading)	15W
Mounting	Pole/Wall
Reset	Reset
LED Indicator	Power, Status, LAN(PD), LAN(PSE), 2.4G, 5G
Environmental Conditions	Operating Temperature: -40°C (-40°F) to 60°C (140°F) Operating Humidity: 90% or Less
Power Saving	802.3az
Internal Buzzer	Y
Housing	Outdoor IP56 Weatherproof Rated
Wireless	
Standard	802.11 a/b/g/n/ac Concurrent Dual-Band
No. of Radios	2
Receiver Sensitivity	≤ -93Bm
Certification	CE/FCC
Fast Roaming	Y
Number of SSIDs	16 (2.4GHz) + 16 (5GHz)
Performance	
Maximum Data Speed	400 + 866Mbps
Concurrent Clients	Up to 100 Per Radio
Security	
Encryption	WEP / WPA / WPA2
Wireless L2 Isolation	Y
Station Isolation	Y
IEEE 802.1x Authenticator	Y
EAP Authentication	PEAP
Hidden SSID	Y
MAC Address Filter	Y
Wireless STA	Y
Rogue AP Detection (w/ NMS)	Y
Software	
Wireless Mode	AP / WDS AP / WDS Bridge / Client
802.1q VLAN	Y (VID = 1-4095)
Spanning Tree	RSTP
QoS	WMM (802.11e)
	Max Associated Station No.
Pass-Through	IPv6 and VPN (PPTP, L2TP/IPsec)
DSCP (802.1p)	Y
Multicast Rate up to 54Mbps	Y

RF Specifications							
Frequency Band	<ul style="list-style-type: none"> <li>•Radio I : 802.11b/g/n 2.412~2.484(GHz)</li> <li>•Radio II : 802.11a/n/ac 5.18~5.24(GHz), 5.26~5.32(GHz), 5.5~5.7(GHz), 5.745~5.825(GHz)</li> </ul> (The supported frequency band is restricted by local regulations.)						
Operation Channels	<ul style="list-style-type: none"> <li>•2.4GHz : US/Canada 1-11; 2.412~2.462GHz Europe 1-13; 2.412~2.472GHz Japan 1-14; 2.412~2.484GHz</li> <li>•5GHz : Country dependent for the following ranges: US/Canada: Band 1:36, 40, 44, 48; 5.180~5.240(GHz) Band 2: 52, 56, 60, 64;5.260~5.320(GHz) Band 3: 100, 104, 108, 112, 116, 120, 124, 128, 132, 136, 140;5.500~5.700(GHz) Band 4:149, 153, 157, 161, 165; 5.745~5.825(GHz) Europe: Band 3: 100, 104, 108, 112, 116, 120, 124, 128, 132, 136, 140; 5.500~5.700(GHz)</li> </ul>						
Transmit Power	<table border="0"> <tr> <td>802.11b 20dBm@1Mbps 20dBm@2Mbps 20dBm@5.5Mbps 20dBm@11Mbps</td> <td>802.11a 20dBm@6Mbps 20dBm@9Mbps 20dBm@12Mbps 19dBm@18Mbps 18dBm@36Mbps 17dBm@48Mbps 16dBm@54Mbps</td> </tr> <tr> <td>802.11g 20dBm@6Mbps 20dBm@9Mbps 20dBm@12Mbps 19dBm@18Mbps 19dBm@24Mbps 18dBm@36Mbps 17dBm@48Mbps 17dBm@54Mbps</td> <td>802.11an(5G) 20dBm@MCS0/8 20dBm@MCS1/9 19dBm@MCS2/10 19dBm@MCS3/11 18dBm@MCS4/12 17dBm@MCS5/13 16dBm@MCS6/14 15dBm@MCS7/15</td> </tr> <tr> <td>802.11gn (2.4G) 20dBm@MCS0/8 20dBm@MCS1/9 20dBm@MCS2/10 19dBm@MCS3/11 19dBm@MCS4/12 18dBm@MCS5/13 17dBm@MCS6/14 17dBm@MCS7/15</td> <td>802.11ac 20dBm@MCS0 20dBm@MCS1 20dBm@MCS2 19dBm@MCS3 19dBm@MCS4 18dBm@MCS5 17dBm@MCS6 17dBm@MCS7 17dBm@MCS8 15dBm@MCS9</td> </tr> </table>	802.11b 20dBm@1Mbps 20dBm@2Mbps 20dBm@5.5Mbps 20dBm@11Mbps	802.11a 20dBm@6Mbps 20dBm@9Mbps 20dBm@12Mbps 19dBm@18Mbps 18dBm@36Mbps 17dBm@48Mbps 16dBm@54Mbps	802.11g 20dBm@6Mbps 20dBm@9Mbps 20dBm@12Mbps 19dBm@18Mbps 19dBm@24Mbps 18dBm@36Mbps 17dBm@48Mbps 17dBm@54Mbps	802.11an(5G) 20dBm@MCS0/8 20dBm@MCS1/9 19dBm@MCS2/10 19dBm@MCS3/11 18dBm@MCS4/12 17dBm@MCS5/13 16dBm@MCS6/14 15dBm@MCS7/15	802.11gn (2.4G) 20dBm@MCS0/8 20dBm@MCS1/9 20dBm@MCS2/10 19dBm@MCS3/11 19dBm@MCS4/12 18dBm@MCS5/13 17dBm@MCS6/14 17dBm@MCS7/15	802.11ac 20dBm@MCS0 20dBm@MCS1 20dBm@MCS2 19dBm@MCS3 19dBm@MCS4 18dBm@MCS5 17dBm@MCS6 17dBm@MCS7 17dBm@MCS8 15dBm@MCS9
802.11b 20dBm@1Mbps 20dBm@2Mbps 20dBm@5.5Mbps 20dBm@11Mbps	802.11a 20dBm@6Mbps 20dBm@9Mbps 20dBm@12Mbps 19dBm@18Mbps 18dBm@36Mbps 17dBm@48Mbps 16dBm@54Mbps						
802.11g 20dBm@6Mbps 20dBm@9Mbps 20dBm@12Mbps 19dBm@18Mbps 19dBm@24Mbps 18dBm@36Mbps 17dBm@48Mbps 17dBm@54Mbps	802.11an(5G) 20dBm@MCS0/8 20dBm@MCS1/9 19dBm@MCS2/10 19dBm@MCS3/11 18dBm@MCS4/12 17dBm@MCS5/13 16dBm@MCS6/14 15dBm@MCS7/15						
802.11gn (2.4G) 20dBm@MCS0/8 20dBm@MCS1/9 20dBm@MCS2/10 19dBm@MCS3/11 19dBm@MCS4/12 18dBm@MCS5/13 17dBm@MCS6/14 17dBm@MCS7/15	802.11ac 20dBm@MCS0 20dBm@MCS1 20dBm@MCS2 19dBm@MCS3 19dBm@MCS4 18dBm@MCS5 17dBm@MCS6 17dBm@MCS7 17dBm@MCS8 15dBm@MCS9						
Receiver Sensitivity	<table border="0"> <tr> <td>802.11b ≤-93dBm@1Mbps ≤-85dBm@11Mbps</td> <td>802.11a ≤-85dBm@6Mbps ≤-68dBm@54Mbps</td> </tr> <tr> <td>802.11g ≤-86dBm@6Mbps ≤-70dBm@54Mbps</td> <td>802.11an(5G) ≤-85dBm@MCS0 ≤-64dBm@MCS7</td> </tr> <tr> <td>802.11gn (2.4G) ≤-86dBm@MCS0 ≤-62dBm@MCS8 ≤-57dBm@MCS9</td> <td>802.11ac ≤-85dBm@MCS0 ≤-61dBm@MCS8 ≤-54dBm@MCS9</td> </tr> </table>	802.11b ≤-93dBm@1Mbps ≤-85dBm@11Mbps	802.11a ≤-85dBm@6Mbps ≤-68dBm@54Mbps	802.11g ≤-86dBm@6Mbps ≤-70dBm@54Mbps	802.11an(5G) ≤-85dBm@MCS0 ≤-64dBm@MCS7	802.11gn (2.4G) ≤-86dBm@MCS0 ≤-62dBm@MCS8 ≤-57dBm@MCS9	802.11ac ≤-85dBm@MCS0 ≤-61dBm@MCS8 ≤-54dBm@MCS9
802.11b ≤-93dBm@1Mbps ≤-85dBm@11Mbps	802.11a ≤-85dBm@6Mbps ≤-68dBm@54Mbps						
802.11g ≤-86dBm@6Mbps ≤-70dBm@54Mbps	802.11an(5G) ≤-85dBm@MCS0 ≤-64dBm@MCS7						
802.11gn (2.4G) ≤-86dBm@MCS0 ≤-62dBm@MCS8 ≤-57dBm@MCS9	802.11ac ≤-85dBm@MCS0 ≤-61dBm@MCS8 ≤-54dBm@MCS9						
Management							
Deployment	Standalone (AP mode)						
	<b>Managed AP mode:</b> 1) Managed by AP Controller (APC500) or Edimax Pro Master AP 2) Managed by Office 1-2-3 Master AP (with dedicated firmware)						
Configuration	HTTP/HTTPS						
	SNMP v1, v2c, v3						
	CLI (Telnet, SSH)						
RADIUS Server	Built-In						
Auto-Channel	Y						
Private MIB	Y						
Accessories							
Mounting Brackets	Wall-Mount & Pole-Mount Bracket Kit						
Antennas	2.4GHz /5GHz Omni x 2						
Optional Accessories	GP-101IT IEEE802.3at PoE Injector						



Maximum performance, actual data rates, and coverage will vary depending on network conditions and environmental factors. Product specifications and design are subject to change without notice. Copyright © 2018 Edimax Technology Co. Ltd. All rights reserved.

www.edimax.com